

Managing your thermal profiles just got a whole lot smarter!



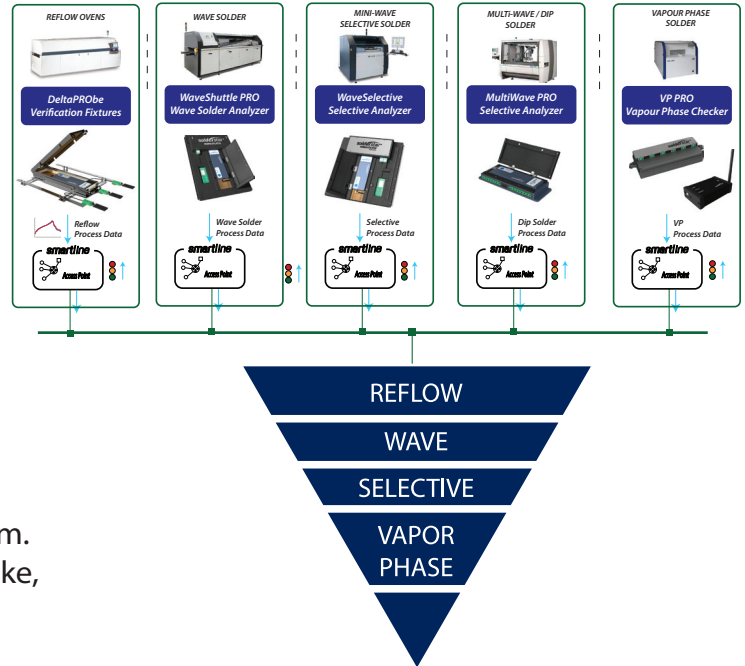
X-PROCESS THERMAL PROFILE MANAGEMENT

Smartline-X from Solderstar, is a next generation profiling platform that streamlines the whole procedure of verifying your soldering processes across your manufacturing sites.

What soldering processes are supported ?

Solderstar has profiling instruments and support for all these processes :-

- ✓ Reflow
- ✓ Wave Solder
- ✓ Selective Solder
- ✓ Dip/Multi-Wave Solder
- ✓ Vapor Phase



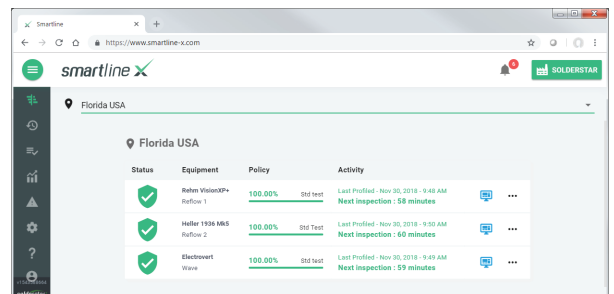
How does it work ?

A reference profile is captured from each of your soldering processes, Smartline-X can then use this reference along with a set of process rules to validate any future profiles captured by your team. The rules can be as advanced or as simple as your like, it is totally flexible.

How do I know its time to check my process ?

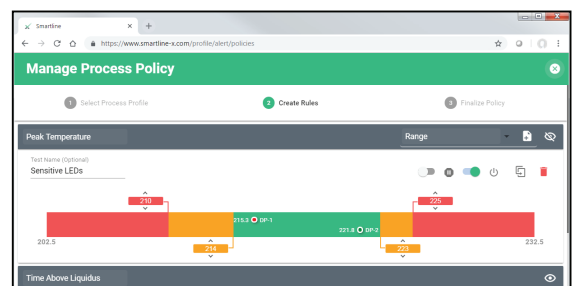
Each machine configured on the Smartline-X system can have an inspection schedule defined, the schedule is totally flexible and can be configured to match you preferred profiling regime.

Overview dashboards show the live status of your process control, profiles that are due to be verified are clearly shown along current process conditions.



Alerts

Operators and line engineers are automatically notified of process condition changes or profile a check being required. Detail and summary reports are instantly available highlighting where process problems have occurred.

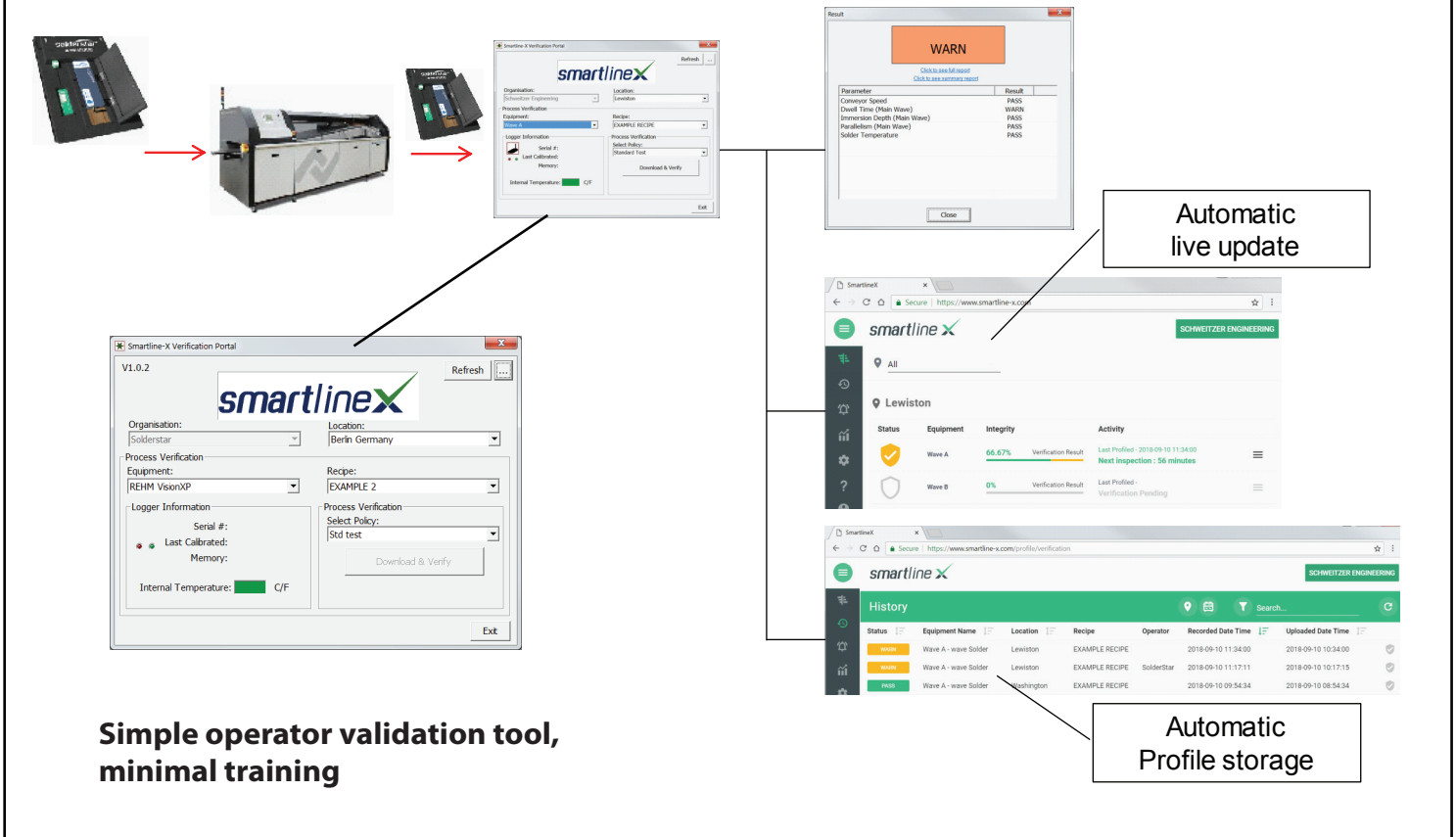


What about security ?

All traffic to and from the Smartline-X system is using SSL and HTTPS so that all data is encrypted whether deployed on your own private network or via a cloud hosted server.

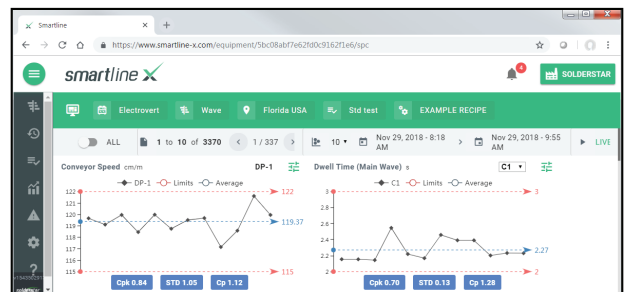


EXAMPLE WORKFLOW - WAVE SOLDER



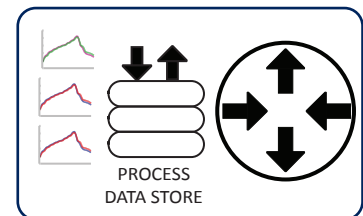
SPC - Cpk and more

Smartline-X provides much more than just process traceability. Live views are provided that instantly update when new data is available, these provide real-time SPC charting and Cpk calculations. Control limits are fully definable allowing fine tuning and live trend plotting of every parameter captured



Data storage and sharing

All profiling data, process rules and reporting is provided via a web based portal and document store capable of holding millions of profiles. Smartline-X can be deployed on a local server at your site or via a cloud based server.



Smartline-X utilizes the latest web technologies and interfaces, a full API is available to access data with other systems. Future work will allow data/ status information to be shared with factory management packages via industry protocols such as CFX.

For more information contact your regional Solderstar office



Solderstar Ltd
Unit C2 - Castle Park Industrial Estate
Bower Street, Oldham, UK OL1 3LN
Tel: +44 (0)1706 354846
Fax: +44 (0)1706 675296
Email: info@solderstar.co.uk



Solderstar LLC
4500 140th Avenue North, Suite 101
Clearwater, FL 33762, USA
Tel: +1 (727) 461 2270
Fax: +1 (727) 538 4237
Email: info@solderstar.com



Solderstar (Germany)
Dehmer Str. 48
32549 Bad Oeynhausen, Germany
Tel: +49 5731 3002811
Fax: +49 5731 3002814
Email: info@solderstar.de